

**URBANEST REALTY** 

Presents



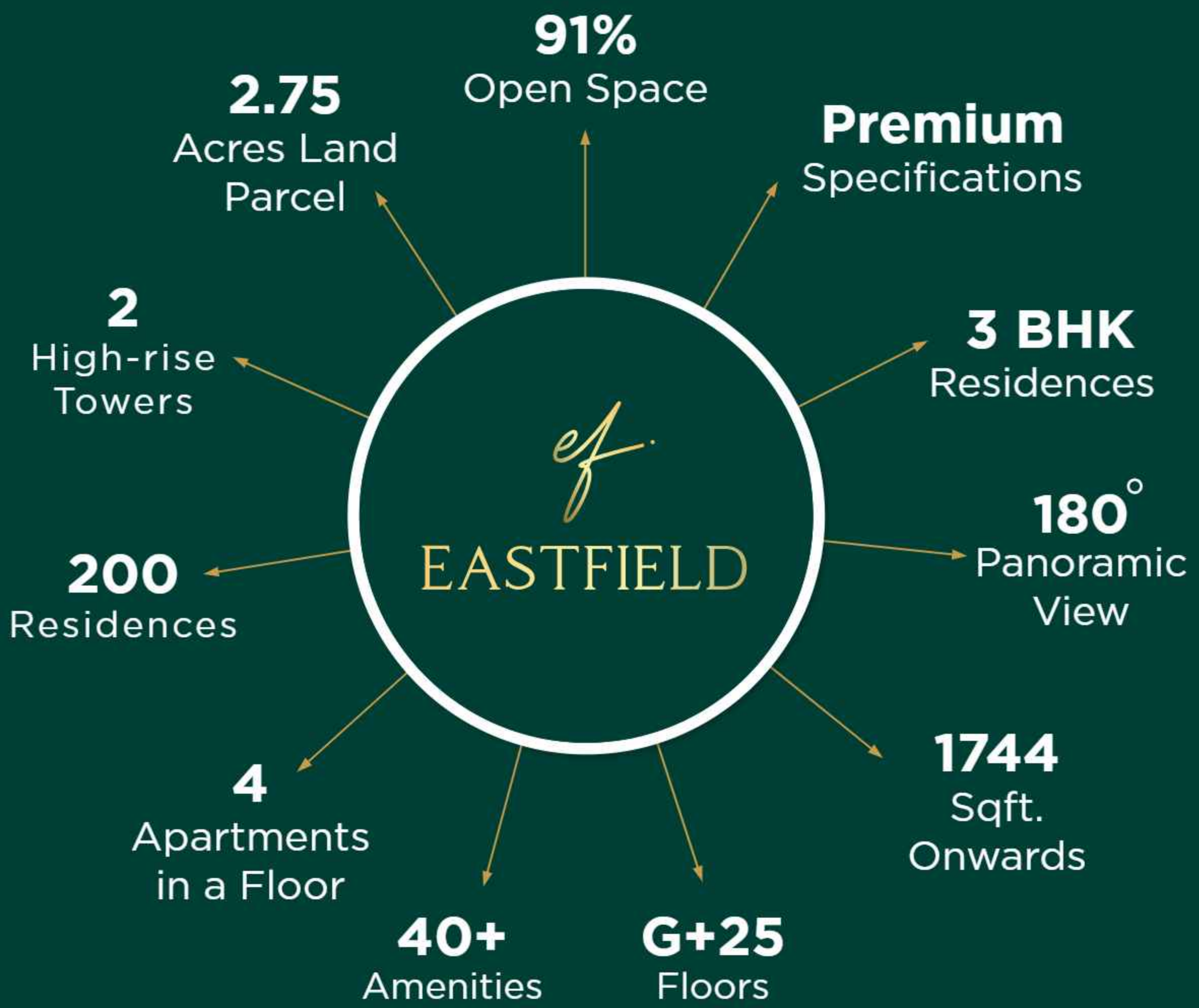
PRM/KA/RERA/1250/304/PR/131224/007290



# THE MASTERPIECE COLLECTION

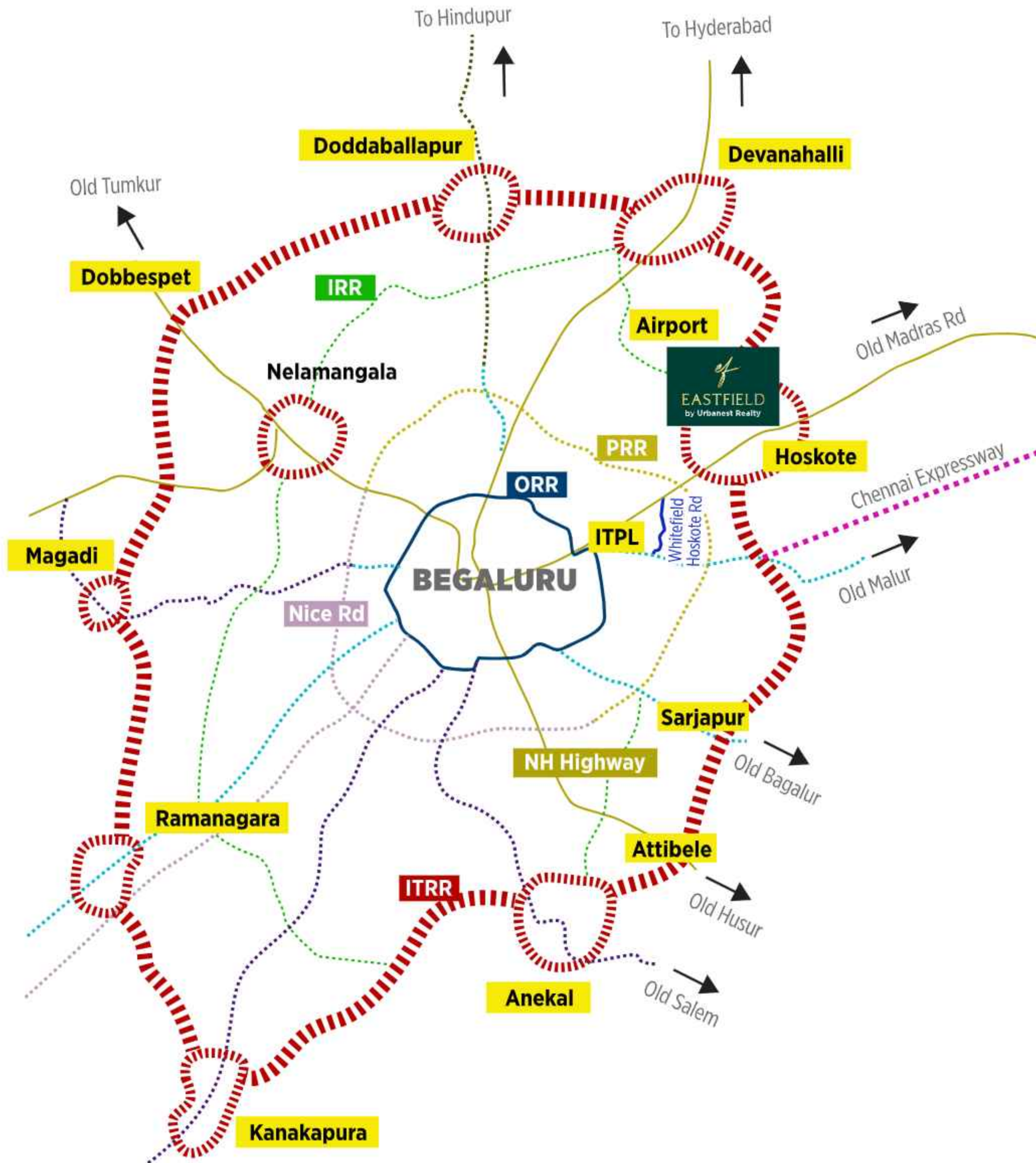
3 BHK Residences

**# HOSA** | **HOSKOTE**  
BENGALURU



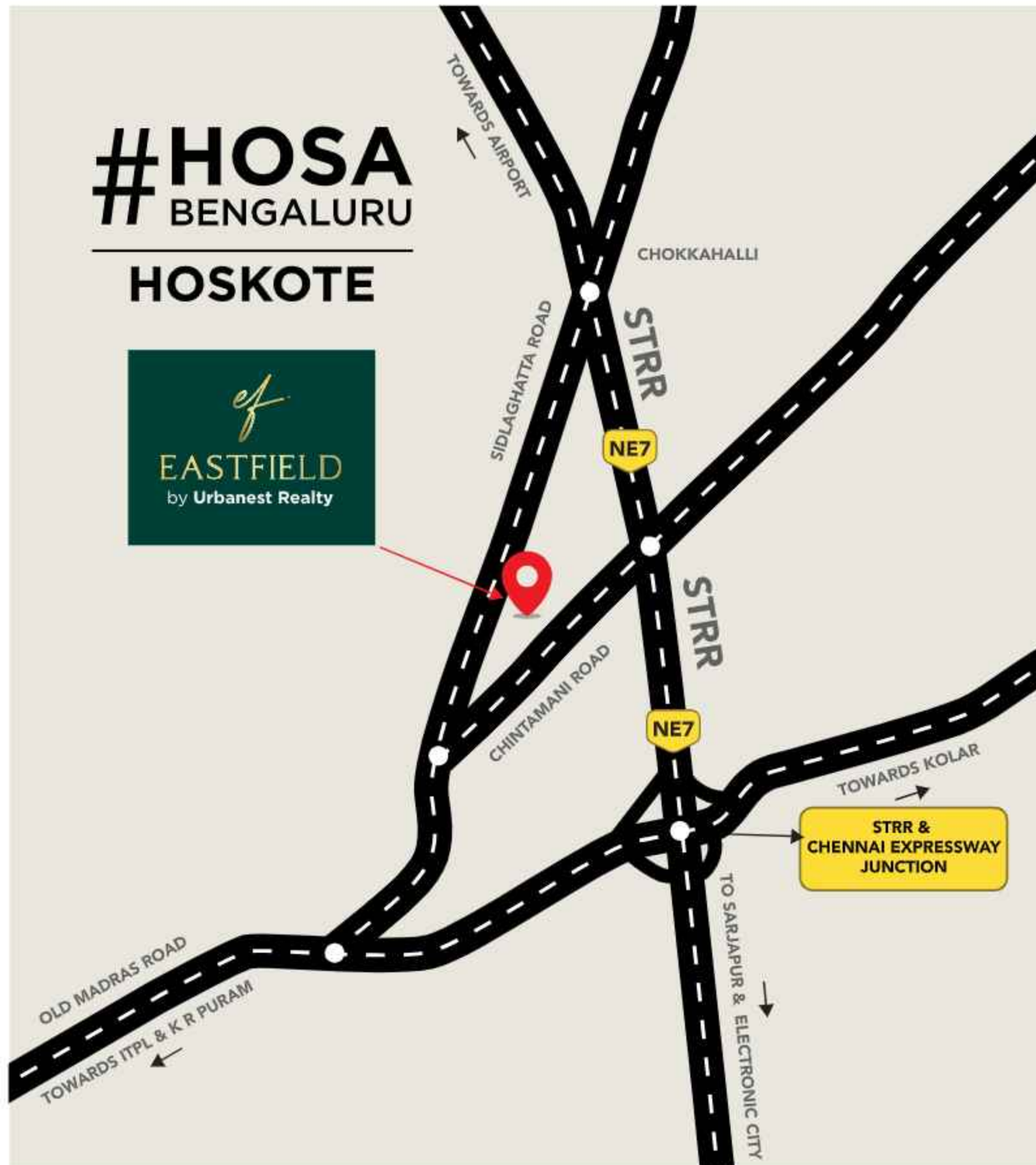
# LIVE CONNECTED TO EXPRESSWAYS

360° access connects all NH, NE, SH, and major hubs of Bengaluru via STRR.



## STRATEGIC LOCATION

Eastfield by Urbanest Realty is located ideally in Chintamani, Hoskote. A rapidly growing neighborhood that blends tranquillity with urban convenience, offering a peaceful retreat while still providing easy access to key destinations.



STRR access at your doorstep  
Reach ITPL, the Airport, Aerospace Park, as well as Sarjapur & Electronic City,  
all within 30 minutes.

# LOCATION ADVANTAGES



**National Public School**  
30 mins, 15 km

**Jain Heritage School**  
20 mins, 10 km

**Vibgyor High School**  
18mins, 8 km

**Capstone High CBSE School**  
7 mins, 3.8 km

**Shriram Global School**  
27 min, 14 km

**Sun Valley Public School**  
18 min, 8.7 km

**Sathya Sai Hospital**  
50 min, 26 km

**Manipal Hospital**  
40 min, 20 km

**MVJ Medical College**  
8 min , 4.7 km

**Siliconcity Hospital**  
7 mins, 4.7 km

**Ovum Woman & Child care**  
7 min, 4.7 km

**Bangalore Pet Hospital**  
25 min, 13 km

**Airport**  
25 mins, 35 km

**Whitefield Metro (Kadugodi)**  
30 mins, 15 km

**K R Puram Railway Station**  
40 min, 21 km

**Whitefield Railway Station**  
28 min, 14 km

**Kadugodi Tree Park Metro**  
36 min- 16 km

**Hoskote Bus Stand**  
11 min, 5 km

**Phoenix Marketcity**  
35 min, 20 km

**Orion Uptown Mall**  
15 min, 11 km

**Nexus Shantiniketan**  
40 min, 19 km

**Park Square Mall**  
40 min, 17 km

**Dream Mart Hypermarket**  
10 min, 4.2 km

**SBR Horizon**  
22 min, 11.5 km

**ITPL**  
37 min, 17 km

**TCS**  
40 min, 18 km

**Bearys Global Research Triangle**  
20 min, 9.3 km

**Tata Elxsi**  
38 min, 19 km

**Aero Space Park**  
31 min, 22 km

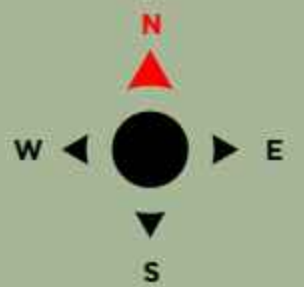
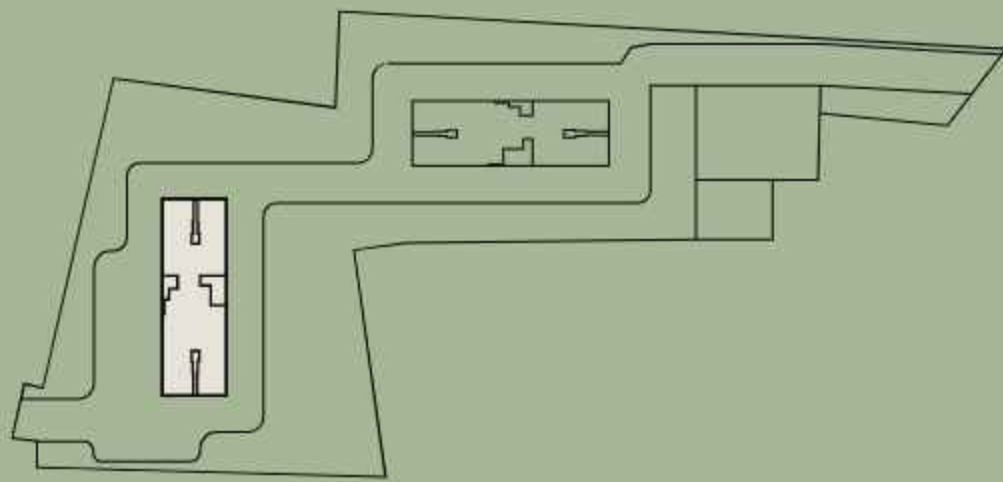
**Siemens Limited**  
20 mins, 11 km



## MASTER PLAN

- |                                    |                                    |                             |
|------------------------------------|------------------------------------|-----------------------------|
| 1. Gates / Grand Entrance          | 16. Relax Zone Connected To Courts | 31. Kids' Play Waiting Area |
| 2. Reception Garden                | 17. Cricket Pitch                  | 32. Kids' Play Area         |
| 3. Senior Citizens Zone            | 18. Outdoor Gym and Indoor Gym     | 33. Outdoor Party Lawn      |
| 4. Swimming Pool                   | 19. Clubhouse Garden               | 34. Accent Trees            |
| 5. Water Fountains                 | 20. Tree Avenue                    | 35. Pet Park                |
| 6. Waterfall Pool Counter          | 21. Cycling Track                  | 36. Visitors Parking        |
| 7. Kids' Swimming Pool             | 22. Ramp                           | 37. Amphitheatre            |
| 8. Water Mirror Seating Area       | 23. Clubhouse                      | 38. Visitors Parking        |
| 9. Outdoor Garden + Seating Area   | 24. Restaurants Tables Zone        | 39. Rain Tree Park          |
| 10. Relax Zone Connected To Courts | 25. Visitors Parking               | 40. Garden                  |
| 11. Skating Rink                   | 26. Garden                         | 41. Spillover Zone          |
| 12. Dribble Court                  | 27. Flower Garden                  | 42. Jogging Track           |
| 13. Topiary Garden + Tables        | 28. Jogging Track                  | 43. Ramp                    |
| 14. Basketball Court               | 29. Multipurpose Lawn              |                             |
| 15. Tennis Court                   | 30. Fountains And Seating Area     |                             |

# TOWER A

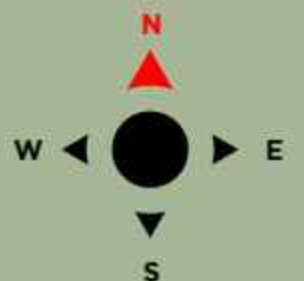
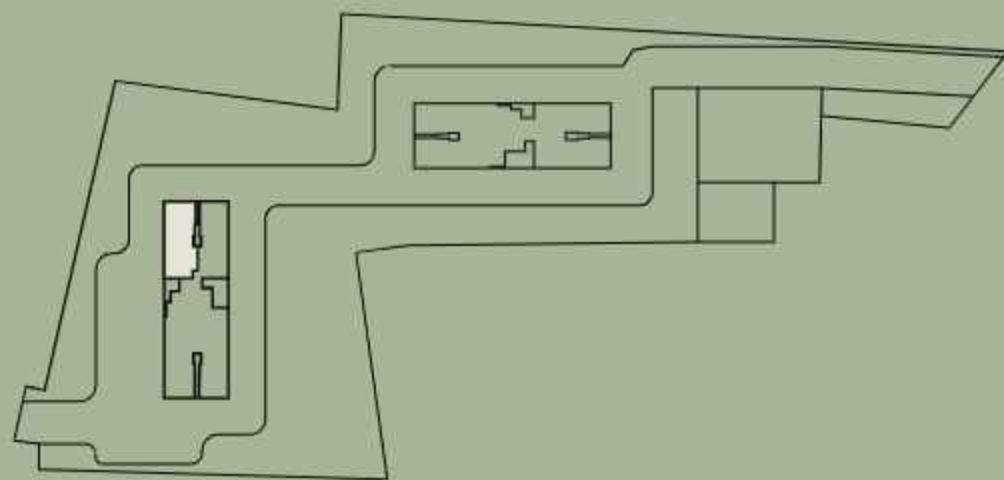




# TOWER A | UNIT-1

EAST FACING, 3 BEDROOMS AND 3 BATHROOMS

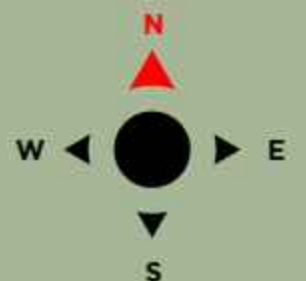
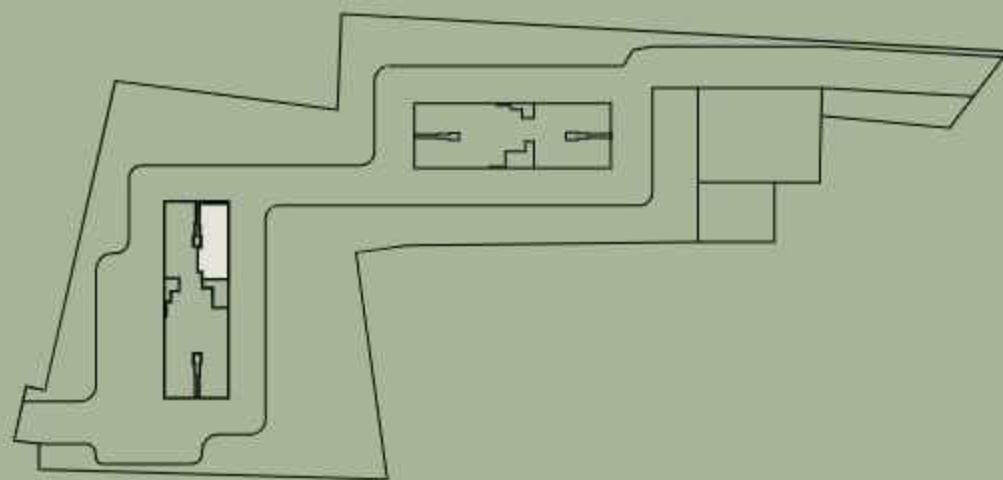
	Sqmt.	Sqft.
RERA CARPET AREA	113.52	1222
BALCONY & UTILITY AREA	11.2	120
SALEABLE AREA	162.20	1746



# TOWER A | UNIT-2

WEST FACING, 3 BEDROOMS AND 3 BATHROOMS

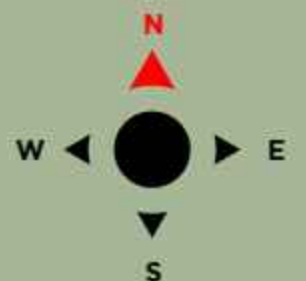
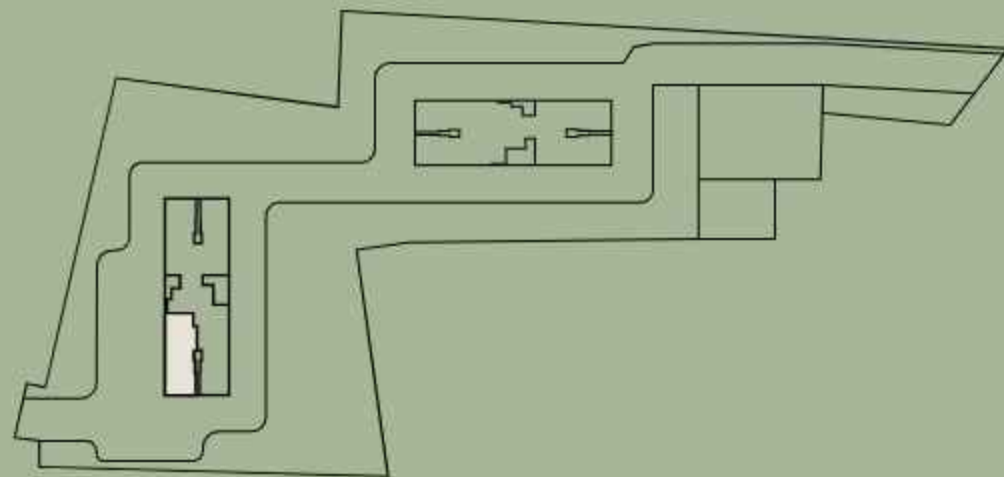
	Sqmt.	Sqft.
<b>RERA CARPET AREA</b>	<b>114.82</b>	<b>1236</b>
<b>BALCONY &amp; UTILITY AREA</b>	<b>12.51</b>	<b>135</b>
<b>SALEABLE AREA</b>	<b>164.06</b>	<b>1766</b>



# TOWER A | UNIT-3

EAST FACING, 3 BEDROOMS AND 3 BATHROOMS

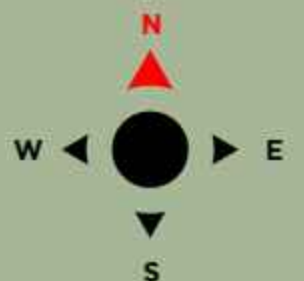
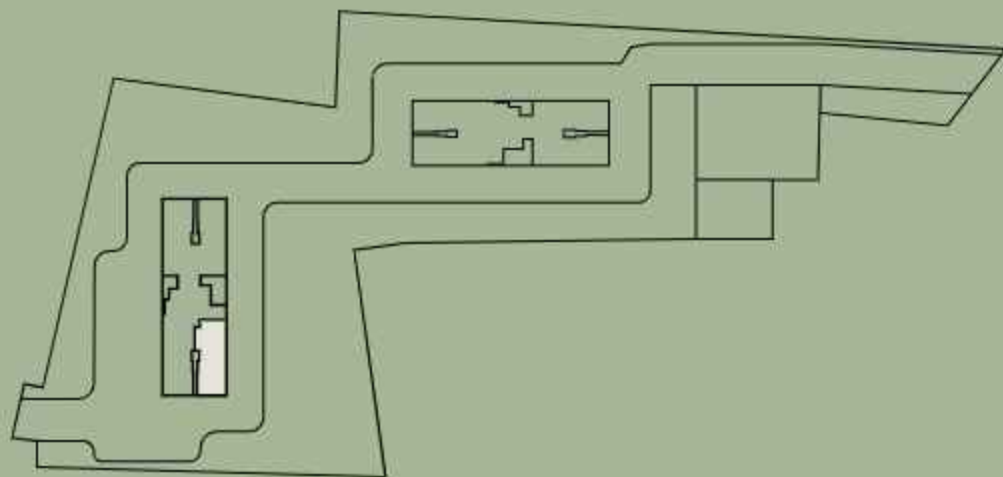
	Sqmt.	Sqft.
<b>RERA CARPET AREA</b>	<b>122.63</b>	<b>1320</b>
<b>BALCONY &amp; UTILITY AREA</b>	<b>13.35</b>	<b>144</b>
<b>SALEABLE AREA</b>	<b>175.21</b>	<b>1886</b>



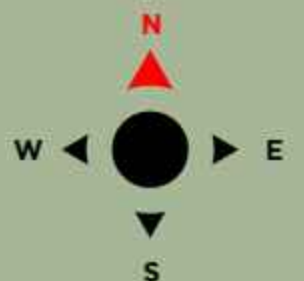
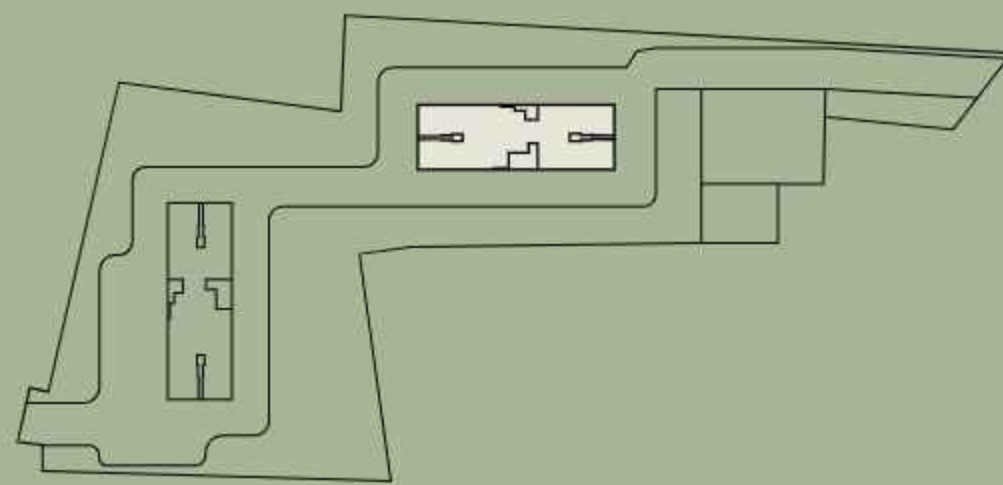
# TOWER A | UNIT-4

WEST FACING, 3 BEDROOMS AND 3 BATHROOMS

	Sqmt.	Sqft.
RERA CARPET AREA	113.52	1222
BALCONY & UTILITY AREA	11.2	120
SALEABLE AREA	162.20	1746



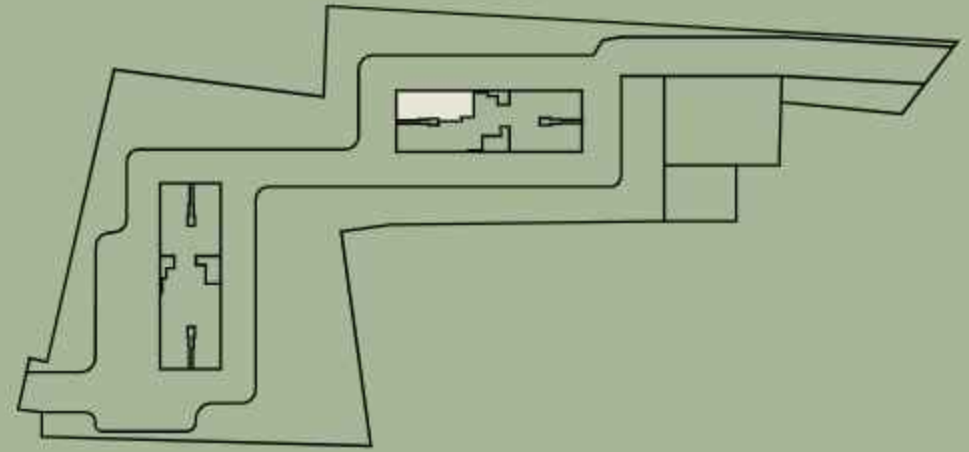
# TOWER B



# TOWER B | UNIT-1

SOUTH FACING, 3 BEDROOMS AND 3 BATHROOMS

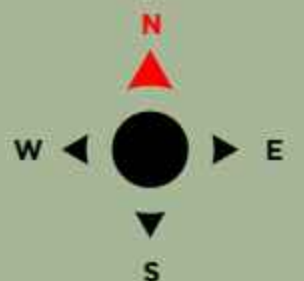
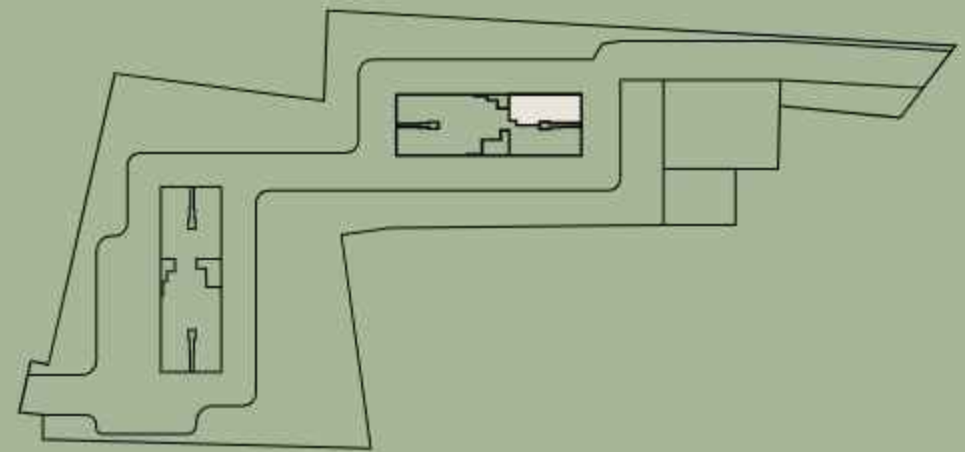
	Sqmt.	Sqft.
RERA CARPET AREA	120.4	1296
BALCONY & UTILITY AREA	11.14	120
SALEABLE AREA	172.05	1852



# TOWER B | UNIT-2

SOUTH FACING, 3 BEDROOMS AND 3 BATHROOMS

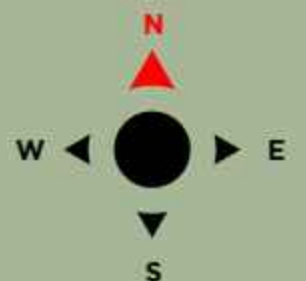
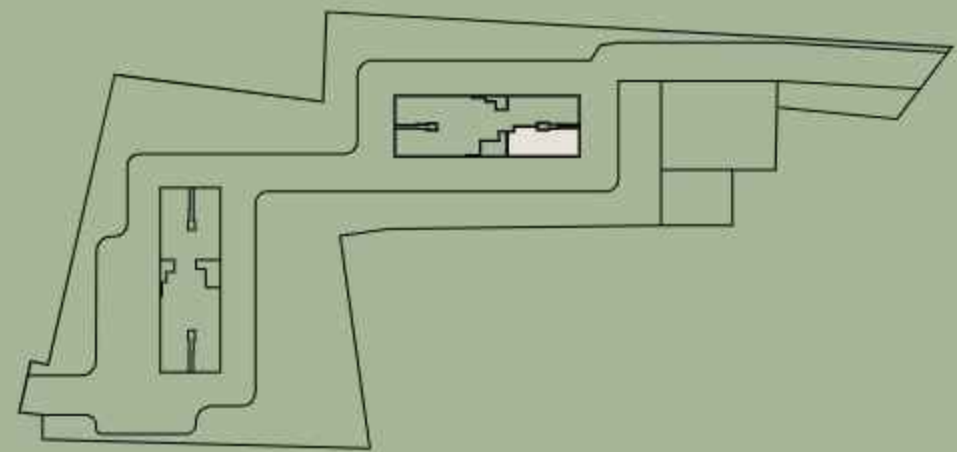
	Sqmt.	Sqft.
RERA CARPET AREA	114.82	1236
BALCONY & UTILITY AREA	12.51	135
SALEABLE AREA	164.06	1766



# TOWER B | UNIT-3

NORTH FACING, 3 BEDROOMS AND 3 BATHROOMS

	Sqmt.	Sqft.
RERA CARPET AREA	113.43	1221
BALCONY & UTILITY AREA	11.14	120
SALEABLE AREA	162.02	1744

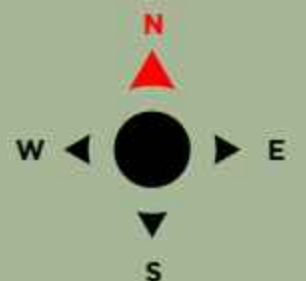
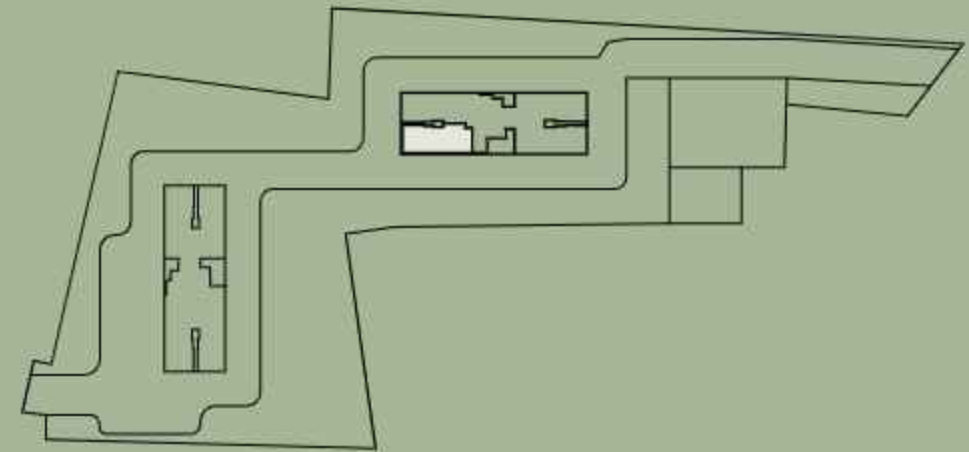




# TOWER B | UNIT-4

NORTH FACING, 3 BEDROOMS AND 3 BATHROOMS

	Sqmt.	Sqft.
RERA CARPET AREA	114.82	1236
BALCONY & UTILITY AREA	12.46	134
SALEABLE AREA	164.06	1766





## 91% OPEN SPACE

- Relax in nature's serenity
- 2.75 acres of tranquil sanctuary



## 2 HIGH-RISE TOWERS

- Iconic structures
- Panoramic views



## **3 BHK RESIDENCES**

- Blend of space, functionality, and design
- 1746 sqft onwards



## 25 STOREYS OF HAPPINESS

- Architectural brilliance
- Modern masterpiece



## RAIN WATER STORAGE FOR **DRINKING UPTO 100 DAYS**

- Efficient system for sustainable water management



## **ENERGY CONSERVATION**

- Smart solar energy utilization for common areas



## **ONLY 4 FAMILIES IN A FLOOR**

- Exclusive living environment
- Enhanced space and comfort





## **ONLY CORNER HOMES**

- Maximized ventilation and light
- Unmatched privacy



## **SYSTEM ALUMINIUM WINDOWS**

- Modern windows offering style and functionality
- Crafted for optimal light and ventilation



## GRAND BALCONIES

- Spacious outdoors
- Stunning views



Actual photo from the model apartment

## **SPACIOUS KITCHEN**

- Dream space for culinary enthusiasts
- Functional design for easy access



Actual photo from the model apartment

## SMART LOCKS

- Advanced security features
- Convenience and safety at your fingertips



## LARGE WINDOWS

- Infinite panoramic views
- Seamless outdoor connection



Actual photo from the model apartment

## 8 FT. HEIGHT DOORS

- Elegant entryways
- Timeless charm



## **ALUMINIUM FORMWORK CONSTRUCTION**

- Faster delivery
- Durability and precision in every unit





Actual photo from the model apartment

## **PREMIUM SPECIFICATIONS**

- Superior craftsmanship
- Attention to detail



## 40+ AMENITIES

- Tailored for all ages
- Spaces for every lifestyle



## **GUEST ACCOMODATIONS**

- 2 Cozy guest rooms
- Designed for your convenience

## DISCLAIMER

This brochure provides general information produced by Urbanest Realty.

While we strive for accuracy, we make no guarantees regarding the completeness, reliability, or suitability of the content.

Any reliance on this information is at your own risk. Visualizations represent potential future developments and may not reflect the current state. Dimensions and measurements are approximate and subject to change, with plans potentially revised without including all depicted elements.

# URBANEST REALTY

At Urbanest Realty, we are committed to delivering the highest quality of construction and upholding our promises. Our primary goal is to ensure complete customer satisfaction and foster lasting relationships.

Through our innovative approach, we have redefined the real estate industry in Bangalore, enabling people to enjoy comfortable living. Each project embodies perfection, precision and quality, striking the perfect balance between aesthetics and functionality.

---

[sales@urbanestrealty.in](mailto:sales@urbanestrealty.in)  
[www.urbanestrealty.in](http://www.urbanestrealty.in)

---

## **Urbanest Realty**

Urbanest Regal, 1st Floor, Basavanapura  
Main Road, K R Puram, Bengaluru - 560036